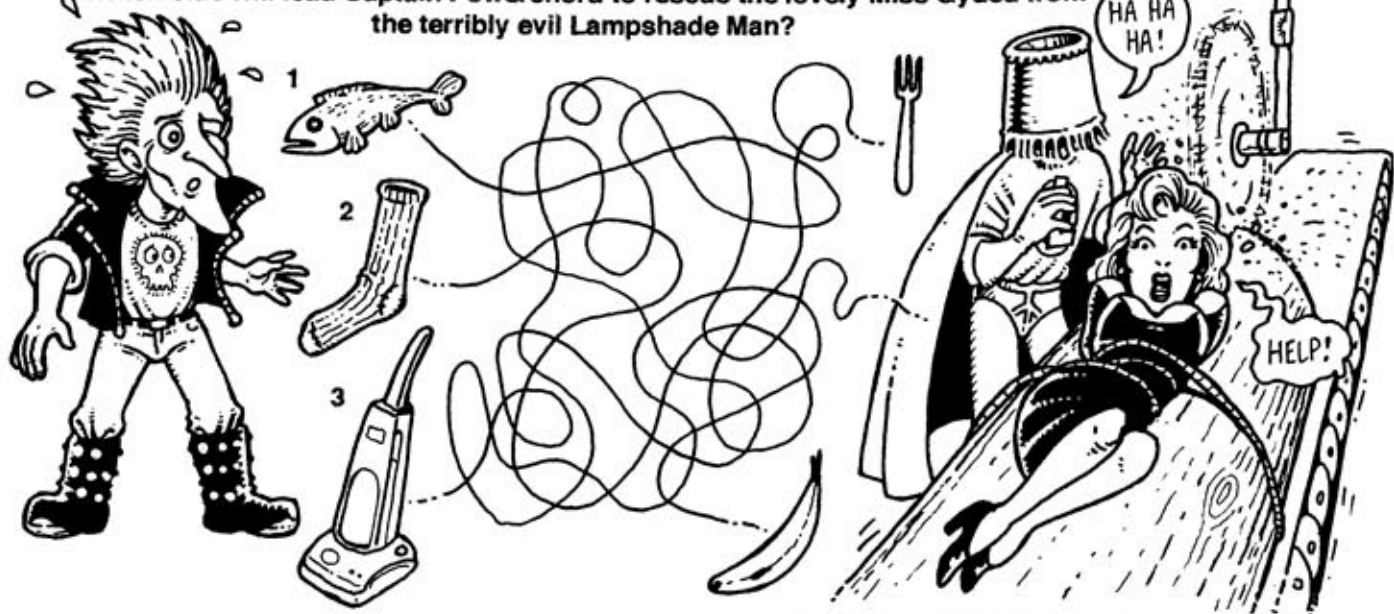


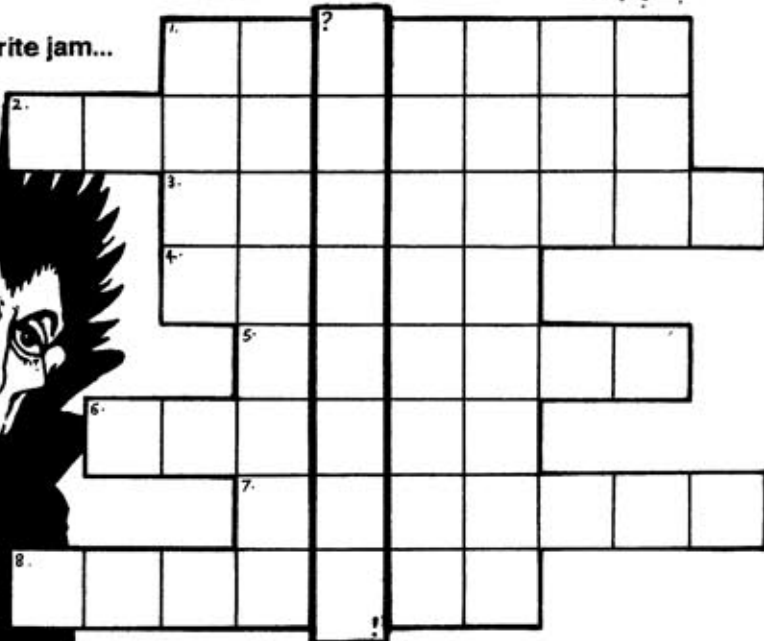
SUZY'S FUN PAGE!

Which clue will lead Captain Powerchord to rescue the lovely Miss Gyded from the terribly evil Lampshade Man?

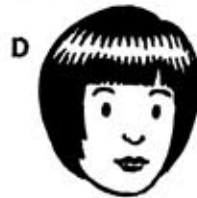


Answer the clues to discover Super Goth's favourite jam...

- 1) Leghorn liberator, groover, a big hamster, the Funky...
- 2) Egyptian Scale forces Robots to believe they are TV funny man.
- 3) Big Dudey samples some of the Captain's.
- 4) Da Da Daa! Riff causes smoke to form on this.
- 5) Nephew of combustable aunt, proboscis prospector.
- 6) Proud of his pies, but too much cinnamon!
- 7) Castrator's chest storage is home to a strange vegetable.
- 8) Obese Agent of the lower register.



There's been a mix up! Return the objects to their rightful owners.



And finally, how many words can you extract from the word POWERCHORD?